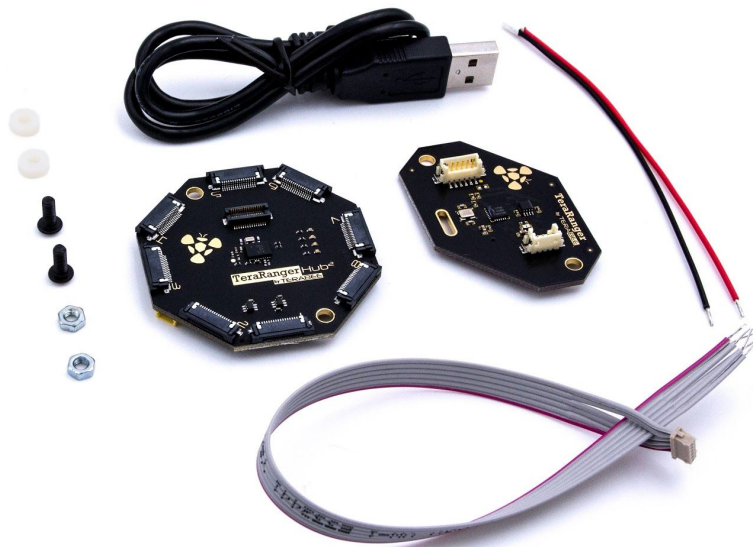


User Manual for TeraRanger Hub Evo



Hardware revision 1.0
Firmware revision 1.1.1

Table of contents:

1 Introduction	3
2 Mechanical Integration	3
2.1 Mechanical Design	3
2.1 Compatibility with TeraRanger Evo sensors	4
2.2 Handling during system assembly	6
2.3 Electrical characteristics	10
2.4 Additional interface for custom requirements	10
3 USB interface	11
3.1 Graphical User Interface	11
3.1.1 Basic Operation	11
3.1.1 Firmware Upgrade	12
3.2 Connecting the TeraRanger Hub Evo to a Host Computer	13
3.2.1 Prerequisites	13
3.2.2 Terminal Emulation Software	13
3.3 LEDs	15
4 UART interface	16
4.1 Pinout information	16
4.2 UART protocol information	17
4.3 Interface for visual signalization	18
5 Communication and Modes	20
5.1 Enable / Disable Hub Evo communication	21
5.2 Printout modes	21
5.2.1 Commands	21
5.2.2 Output format	22
5.3 Operating modes	23
5.3.1 Commands	23
5.4 Output-rate rate modes	23
5.4.1 Commands	24
5.5 Visual signalization	24
5.6 Internal Measurement Unit (IMU) options	25
5.6.1 Euler mode	25
5.6.2 Quaternion mode	26
5.6.3 Quaternions and linear acceleration	26
5.6.4 Commands	27
5.6.5 Output format	27
5.7 Command validation	30



Terabee
90 Rue Henri Fabre
01630, Saint-Genis-Pouilly

Website:
Technical support:
Commercial:

www.teraranger.com
support@teraranger.com
teraranger@terabee.com

1 Introduction

The purpose of this document is to give guidelines for use and integration of the TeraRanger Hub Evo board using a USB or UART communication interface. For streaming distance data via UART, please see instructions on how to use the UART board in section 2.2. Instructions on how to use Hub's onboard Internal Measurement Unit (IMU) are available in section 5.6.

2 Mechanical Integration

2.1 Mechanical Design

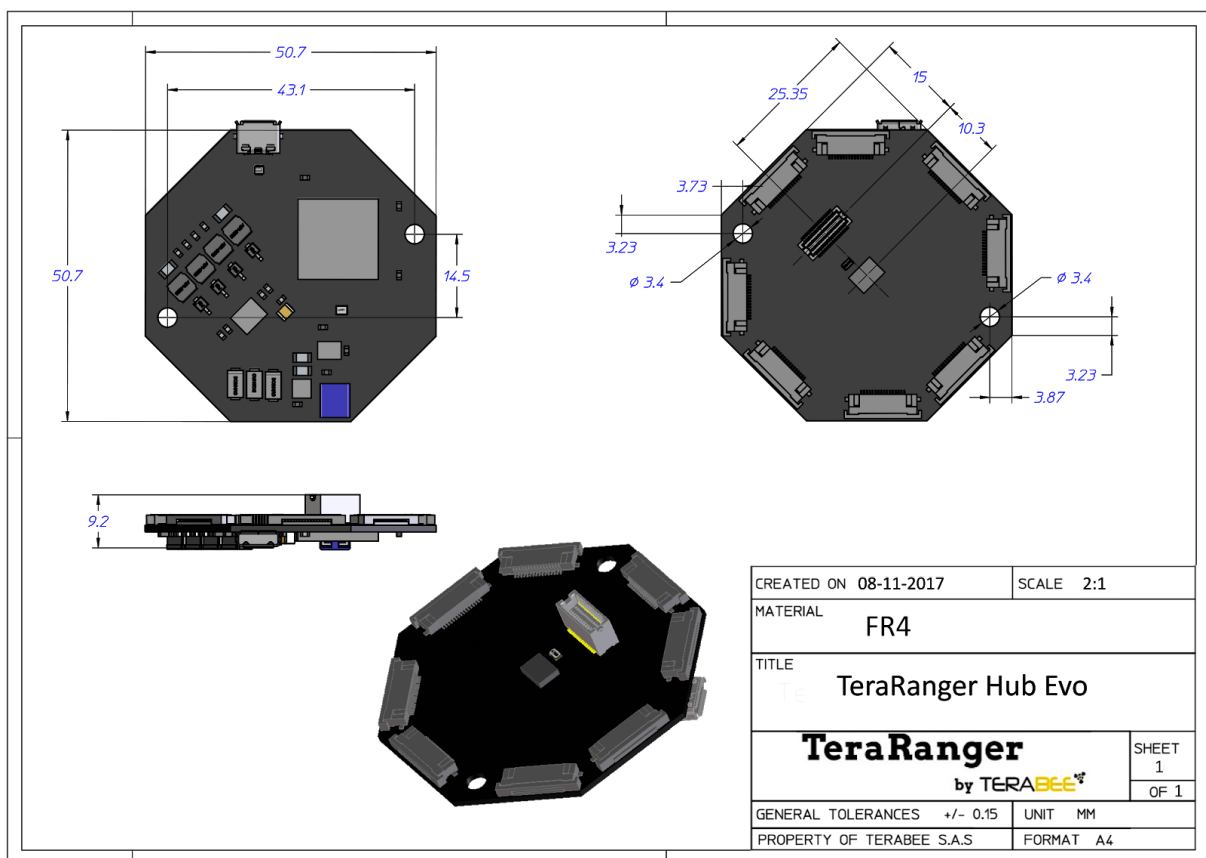


Figure 1. TeraRanger Hub Evo external dimensions

TeraRanger Hub Evo external dimensions are illustrated in Figure 1. The board provides two mounting holes, both designed for M3 screws. The straight distance between mounting holes is 45.5mm. Figure 2 illustrates external dimensions of the UART board.



Terabee
90 Rue Henri Fabre
01630, Saint-Genis-Pouilly

Website:
Technical support:
Commercial:

www.teraranger.com
support@teraranger.com
teraranger@terabee.com

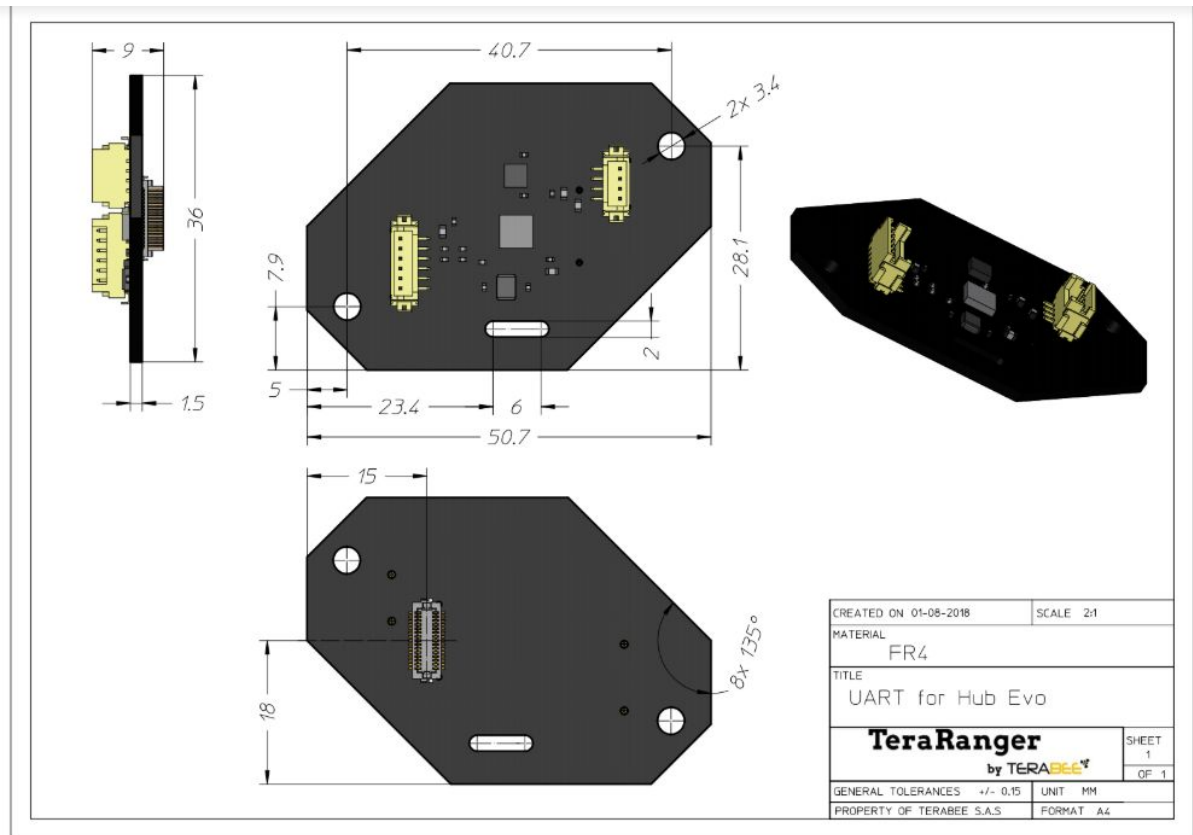


Figure 2. UART board external dimensions

2.1 Compatibility with TeraRanger Evo sensors

TeraRanger Evo is compatible with the following TeraRanger Evo sensors:

- Evo 60m
- Evo 3m
- Evo 600Hz

Up to 8 TeraRanger Evo distance sensors (of one type) can be connected to the Hub Evo board for multi-axis, multi-sensor ranging operations. TeraRanger Evo sensors use a two-part construction where the black colored optical sensor module simply clips to the yellow colored backboard for power management and communication.



Terabee
90 Rue Henri Fabre
01630, Saint-Genis-Pouilly

Website:
Technical support:
Commercial:

www.teraranger.com
support@teraranger.com
teraranger@terabee.com

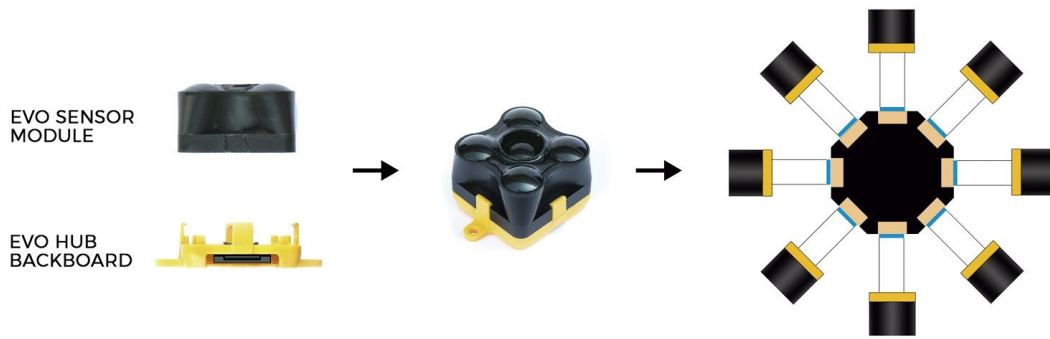


Figure 3. TeraRanger Evo Hub backboard

Please note that the **Hub backboard** is required for connecting Evo sensors to the Hub Evo board (see Figure 3). External dimensions of the Hub backboard are illustrated in Figure 4:

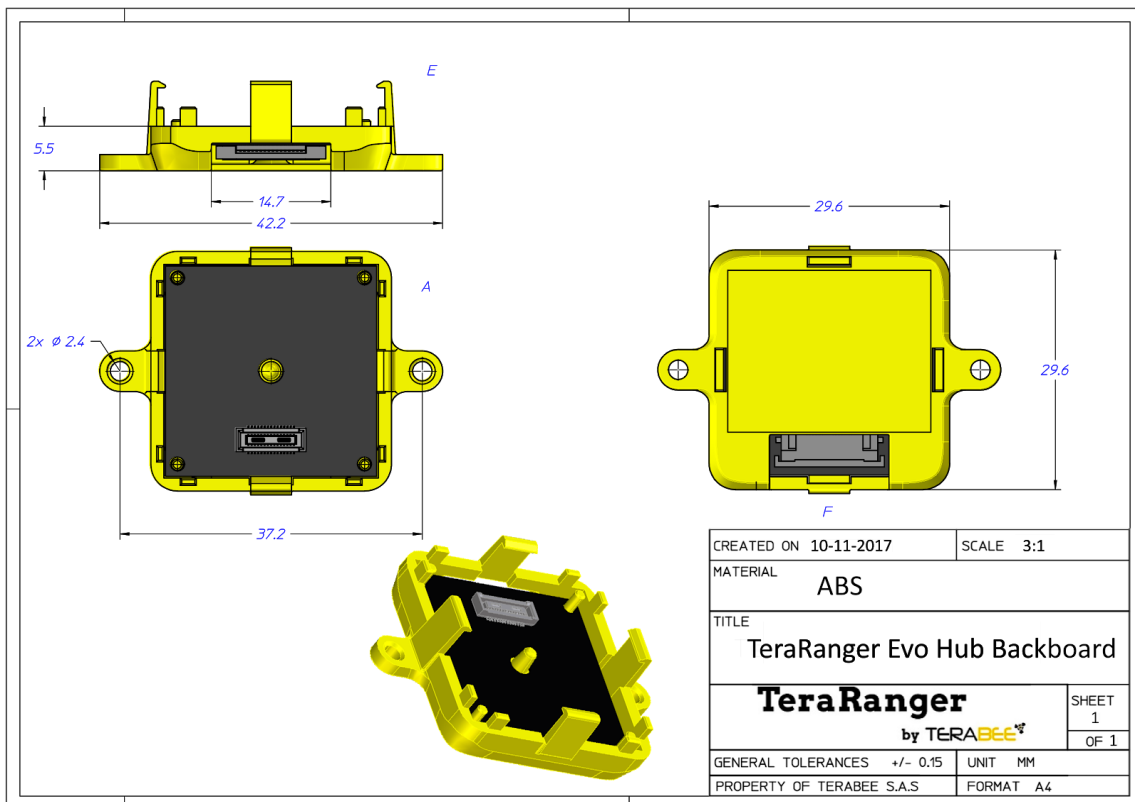


Figure 4. Hub backboard external dimensions



Terabee
90 Rue Henri Fabre
01630, Saint-Genis-Pouilly

Website:
Technical support:
Commercial:

www.teraranger.com
support@teraranger.com
teraranger@terabee.com

2.2 Handling during system assembly

Please follow these simple steps showing how to connect 8 TeraRanger Evo sensors to the TeraRanger Hub Evo.

Step 1. Connecting the cable to the sensor

Start by plugging the flat flex cables (FFC) to the sensor's FFC connector.

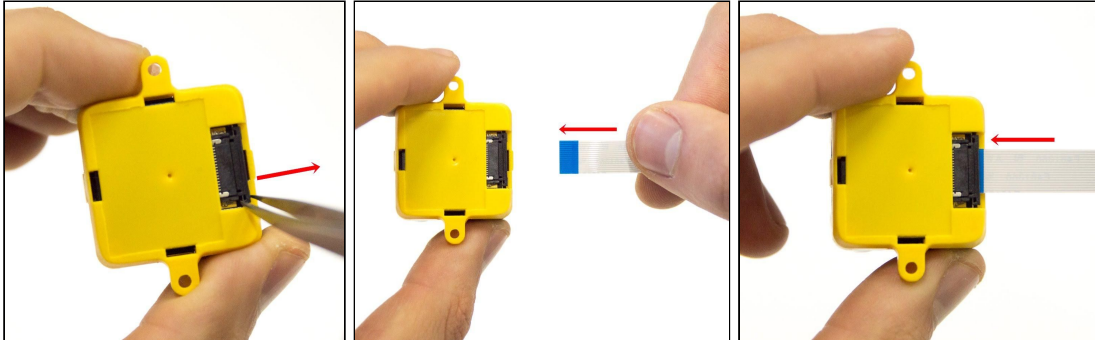


Figure 5. Open, Insert, Close (sensor)

Note that each of the FFC connectors need to be manually opened and then closed when connecting the Flex Cables as shown in Figure 5. For easier opening you can gently pull the small locking 'tabs' on the sides of the connector before pulling the locking mechanism down. You may find this easier with tweezers. The locking mechanism has to be pulled out only a **millimeter or less**, not entirely! Note that, too much force can damage the sensors' connector. Also, double check that the Flex Cable is plugged in straight so as to avoid a potential short-circuit (Figure 6).

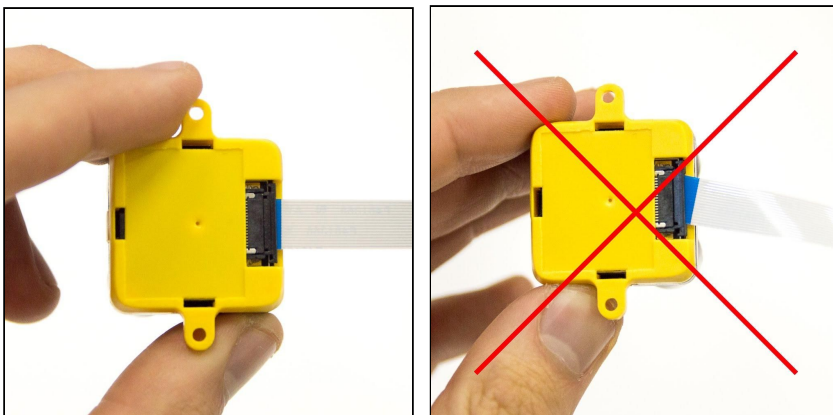


Figure 6. Left image - correct

Right image - incorrect

When connecting the Flex Cable, make sure that the side with conductive tracks is facing the sensor's backboard (yellow part) as shown in Figure 7. Connecting the wrong side of the

TERABEE 

Terabee
90 Rue Henri Fabre
01630, Saint-Genis-Pouilly

Website:
Technical support:
Commercial:

www.teraranger.com
support@teraranger.com
teraranger@terabee.com

cable can damage electronics on the hub and the sensor. Once the cable is positioned inside the connector, close the connector by smoothly pushing the locking mechanism in.

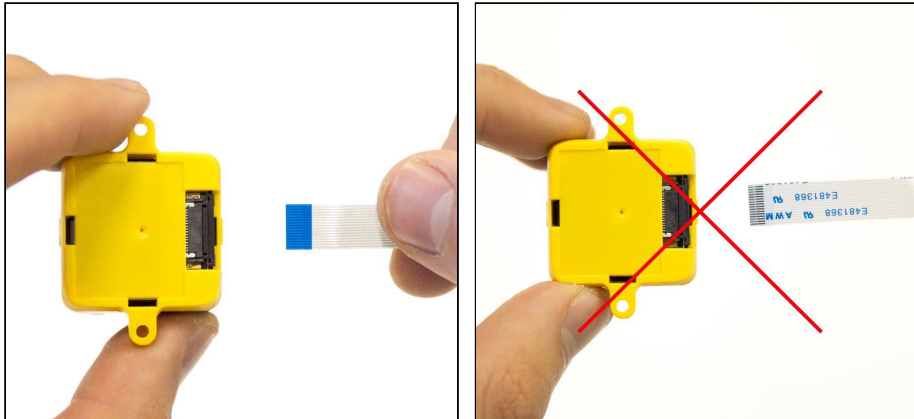


Figure 7. Left image - correct

Right image - incorrect

Step 2. Connecting the sensor to the Hub Evo

Follow the instructions above to connect the cables' other end to the FFC connector on TeraRanger Hub Evo board.

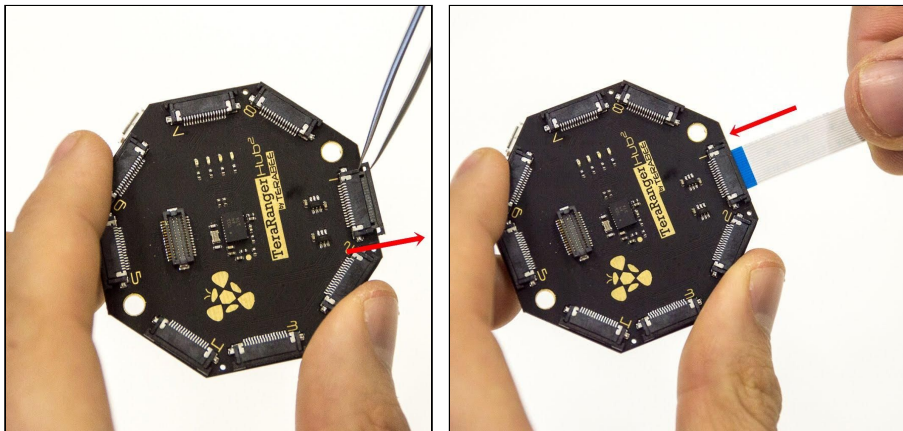


Figure 8. Open, Insert, Close (hub)

Step 3. Connecting all Evo sensors to the Hub Evo

Continue connecting the rest of the Evo sensors to the central Hub board (Figure 9).



Terabee
90 Rue Henri Fabre
01630, Saint-Genis-Pouilly

Website:
Technical support:
Commercial:

www.teraranger.com
support@teraranger.com
teraranger@terabee.com

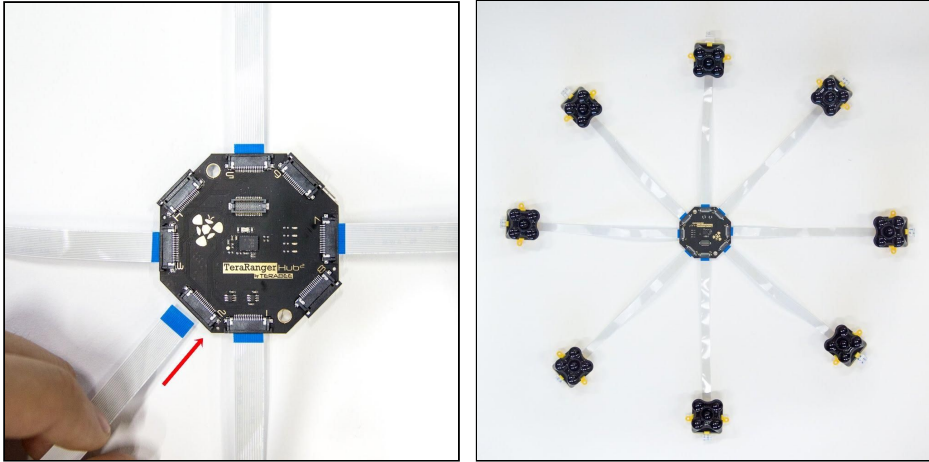


Figure 9. TeraRanger Hub Evo with 8 sensors connected

Once fully assembled, the TeraRanger Hub Evo is ready for testing on your computer. Use the micro USB cable (provided in the package) to connect the TeraRanger Hub Evo with a host computer. Instructions on how to connect the system to a host computer or use a Graphical User Interface are available in section 3.1 and 3.2.

Step 4. Connecting UART board to Hub Evo (optional)

To stream distance data from Hub Evo via UART, please follow these instructions.

Connect the UART board to Hub Evo's FCI Bergstak 30 pin connector. Please make sure you connect the UART board only after all sensors are connected to Hub Evo, as the UART board allows very limited access to FFC connectors 1, 4, 5, 8 on Hub Evo (circled in red). See Figure 10 for visual instructions.

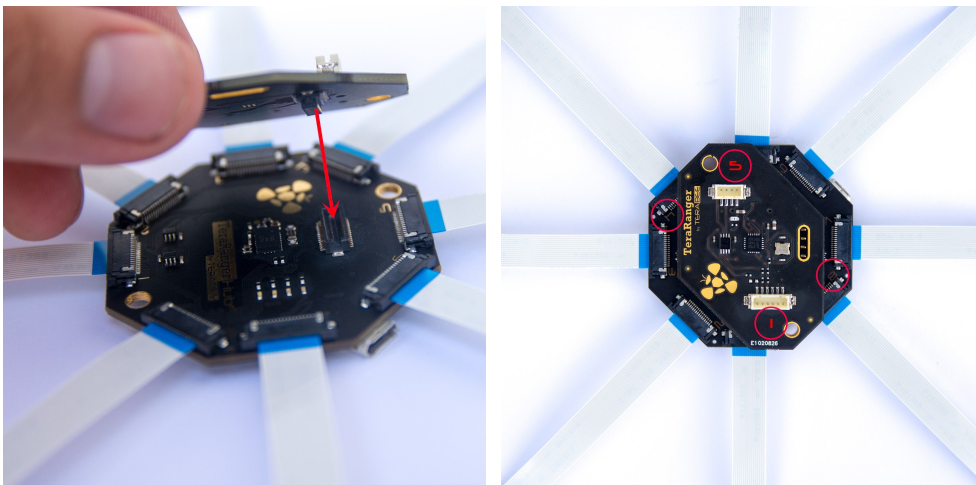


Figure 10. Connecting the UART board to Hub Evo



Terabee
90 Rue Henri Fabre
01630, Saint-Genis-Pouilly

Website:
Technical support:
Commercial:

www.teraranger.com
support@teraranger.com
teraranger@terabee.com

Two spacers are provided in the package to ensure a more robust connection (Figure 11). Place these between the Hub Evo and UART board covering the mounting holes. Please note that you will need M3 screws (not provided) to enable mounting.

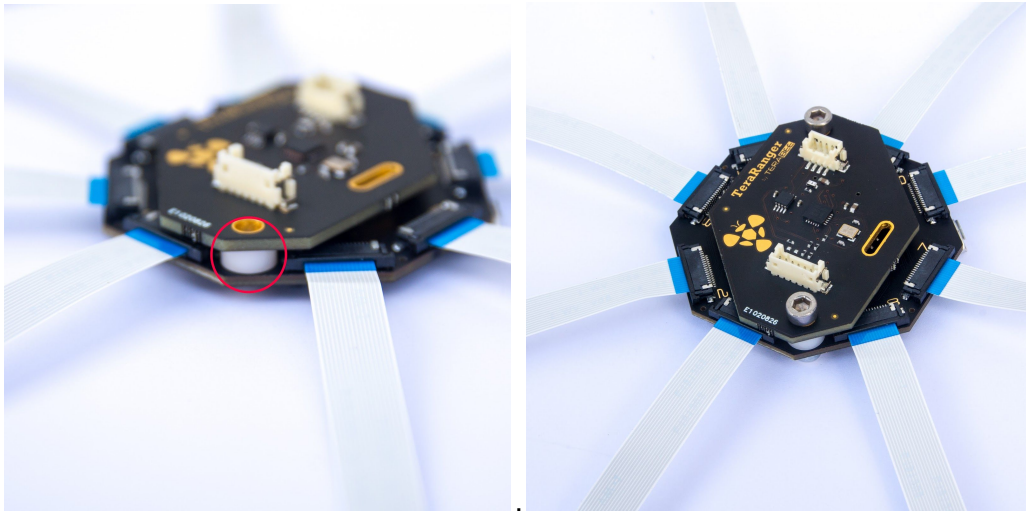


Figure 11. Mounting Hub Evo

Last but not least, connect the UART to open-ended cable to the DF13 6 pin connector located on UART board and the other cable end to the host of your choice.

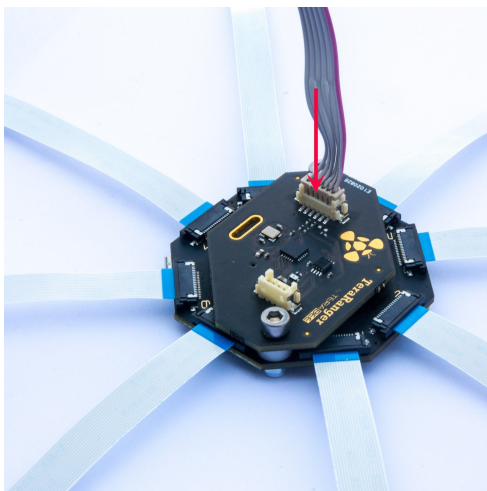


Figure 12. Connecting the UART cable

NB. Wiring instructions for Pixhawk autopilots are available here:

<https://www.terabee.com/evo-connection-to-pixhawk-autopilots-teraranger-tower-evo/>

The following aspects should also be taken into consideration when handling the TeraRanger Hub Evo:



Terabee
90 Rue Henri Fabre
01630, Saint-Genis-Pouilly

Website:
Technical support:
Commercial:

www.teraranger.com
support@teraranger.com
teraranger@terabee.com

- TeraRanger Evo sensors and the UART boards should not be connected or disconnected from the TeraRanger Hub Evo while it is powered
- Do not mount the TeraRanger Hub Evo onto hot surfaces or near other sources of heat
- Take all usual precautions for sensitive electronics such as maintaining a suitable distance from strong electric and magnetic fields, strong radio emitters, etc.
- During assembly and integration, please observe all common ESD precautions

2.3 Electrical characteristics

DC electrical characteristics

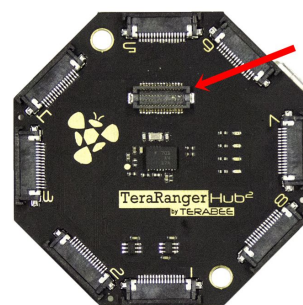
TeraRanger Hub Evo is powered by an external power source, and can not be directly powered by USB. The following table describes the amount of current and voltage needed to make the TeraRanger Hub Evo work properly.

Parameter	Minimum	Typical	Maximum
Power supply			
Voltage input (V)	12	-	24
Current consumption (mA @ 12V)	11	-	1100*

*Maximum current consumption with eight TeraRanger Evo connected and looking at long-range targets or infinity in simultaneous mode. Drops significantly in sequential mode and varies with target reflectivity and distance.

2.4 Additional interface for custom requirements

An extension connector (FCI Bergstak 30 pin connector) is available on the TeraRanger Hub Evo, located in the center of the board. This connector allows you to increase the number of communication interfaces, power supplies and GPIOs, and provides the possibility to modify functionality and performance of Hub Evo. Please note that this additional interface is used by the UAR board, hence custom communication interfaces can be added only when the UART board is not used.



Please contact Terabee at teraranger@terabee.com for more information on additional communication interface development.



Terabee
 90 Rue Henri Fabre
 01630, Saint-Genis-Pouilly

Website:
 Technical support:
 Commercial:

www.teraranger.com
support@teraranger.com
teraranger@terabee.com

3 USB interface

3.1 Graphical User Interface

A free graphical user interface is available for Windows, providing an easy way to visualize the data from all the TeraRanger Evo sensors connected to the TeraRanger Hub Evo. This is useful for demonstration, testing purposes and checking some of the basic parameters of the sensors. It also provides a way to easily upgrade the firmware running on the device, should it be required.

3.1.1 Basic Operation

Make sure TeraRanger Hub Evo is connected to a USB port on your computer and to a suitable power supply. Select File > Connect. You should immediately see distance readings of TeraRanger Evo sensors displayed on the main chart.

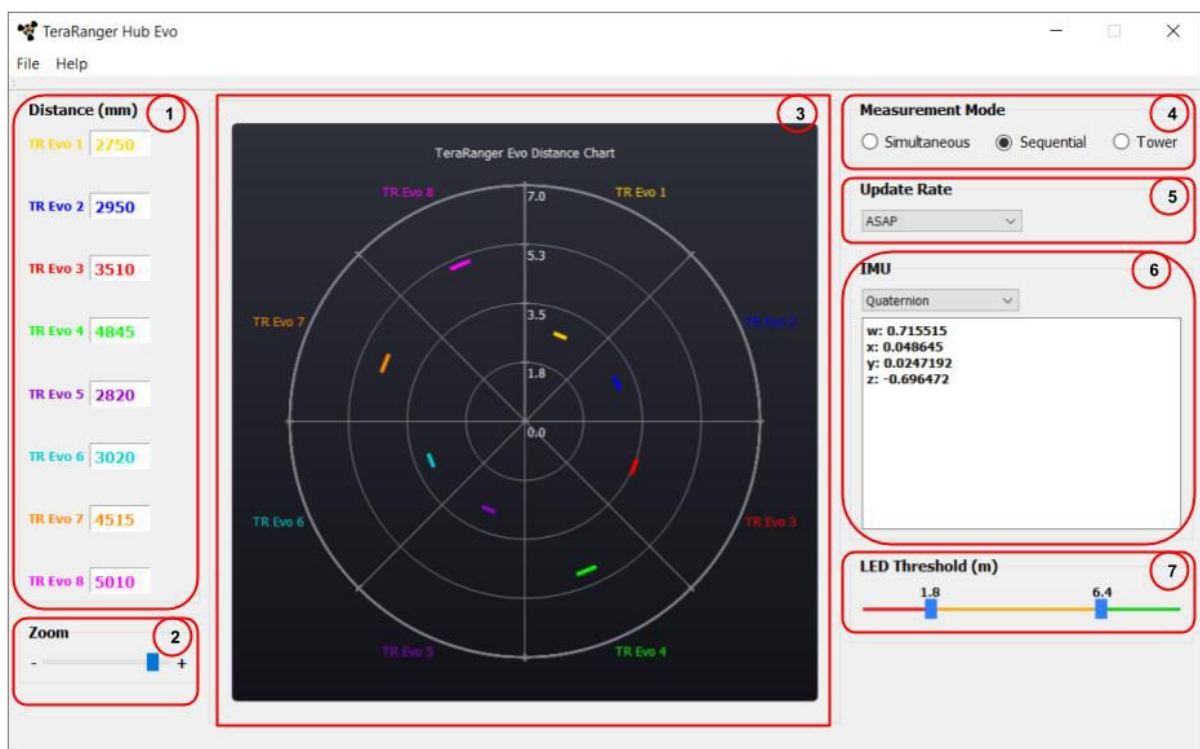


Figure 15. Graphical User Interface



Terabee
90 Rue Henri Fabre
01630, Saint-Genis-Pouilly

Website: www.teraranger.com
Technical support: support@teraranger.com
Commercial: teraranger@terabee.com

#	Display	Description
1	Measurement	Provides up to 8 distance values in millimeters. Sensors are numbered as on the Hub Evo board. Example: TR Evo 3 will stream distance data connected to connector Nr 3 on Hub Evo. In case “-1” value is received, no sensor is connected or not able to measure. In case “+Inf” is received, the measurement is out of range. In case “-Inf” is received, the measurement is below minimum range.
2	Zoom	Modify scale of the main chart (#2) by just dragging the cursor to the left or right. The zoom range is [2.00m ; 60.0m]
3	Main chart	Provides real-time preview of distance measurements streamed from connected Evo sensors. The distance reading is visually represented on the chart by a small segment.
4	Measurement Mode	Switch between Sequential and Simultaneous mode. Please use the Tower mode only when operating the TeraRanger Tower Evo or the TeraRanger Evo Mini Array Kits ¹
5	Update Rate	Select between six options of sensor measurement update rates from a drop-down menu. Choose between Fixed (F) 50Hz, F 100Hz, F 250Hz, F 500Hz, F 600Hz or ASAP (As Soon As Possible).
6	IMU	Enable or disable the option for Inertial Measurement Unit readings. Three IMU modes are available for preview: Euler mode, Quaternion mode, Quaternion and Linear Acceleration mode.
7	LED thresholds	Adjust between three levels of visual signalization provided to discriminate three different ranges. LED signalization feature available only through the use of UART board (optional accessory).

3.1.1 Firmware Upgrade

The current firmware version on your TeraRanger Hub Evo can be found by selecting *Help > About* in the GUI. It is possible to upgrade the firmware running on your device if a new firmware version is made available by Terabee.

¹ This Tower mode works best when sensors are positioned at an angle of minimum 45° between each sensor in TeraRanger Evo Mini Array Kits 4 or 8 sensors



Terabee
90 Rue Henri Fabre
01630, Saint-Genis-Pouilly

Website:
Technical support:
Commercial:

www.teraranger.com
support@teraranger.com
teraranger@terabee.com

Please note the Upgrade Firmware feature is only supported on Windows 7, 8 and 10. Please follow carefully the steps outlined below to avoid permanently disabling your device.

- Select *File > Upgrade Firmware*
- You will be presented with a dialog window asking you to confirm your choice
Beyond this point, if you press 'Yes' it will not be possible to revert to the firmware currently running on your TeraRanger Hub Evo! Press 'No' to cancel and keep the current firmware or 'Yes' to continue
- Read the instructions in the dialog window that opens
- Press 'Select FW' and select the new firmware file with Windows File Explorer
- Press 'Upgrade' and wait until the operation finishes
- Close the Upgrade dialog window

3.2 Connecting the TeraRanger Hub Evo to a Host Computer

The TeraRanger Hub Evo can be easily connected to a Host Computer via the micro USB cable provided in the package. The TeraRanger Hub Evo can interact as a virtual COM port, and data can be streamed directly to terminal emulation software (Terabee advises to use HTerm for Windows and CoolTerm for MacOS).

3.2.1 Prerequisites

For usage on Windows (7, 8) operating system, please download the Virtual COM Port driver from <http://www.st.com/en/development-tools/stsw-stm32102.html> and **follow the "ReadMe file" instructions given by the installer**. After successful installation, unplug the interface for a few seconds, and plug it back in. The virtual COM port should now be available on your PC. Users of Windows 10 do not need to download this driver as the built in Windows driver is recommended.

3.2.2 Terminal Emulation Software

In Windows you can also use any terminal emulation software of your choosing, however we suggest you use HTerm (<http://www.der-hammer.info/terminal/>). Extract the downloaded zip file to the folder of your choice, open it and double click on the "HTerm.exe" document.

Connect the TeraRanger Hub Evo to your computer and select the corresponding USB port (click "R" button to refresh the port list). Select values for the following fields:

- Baud rate: 115200;



Terabee
90 Rue Henri Fabre
01630, Saint-Genis-Pouilly

Website:
Technical support:
Commercial:

www.teraranger.com
support@teraranger.com
teraranger@terabee.com

- Data Bits: 8;
- Parity: None;
- Stop Bits: 1.

For easier readings, select the “LF” option for “Newline at” tab. See Figure 13 for visual instructions.

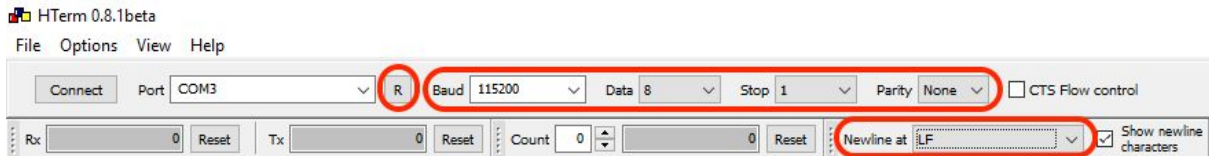


Figure 13. H-Term parameters

Once you have selected the USB port and required values, click on the “Connect” button.

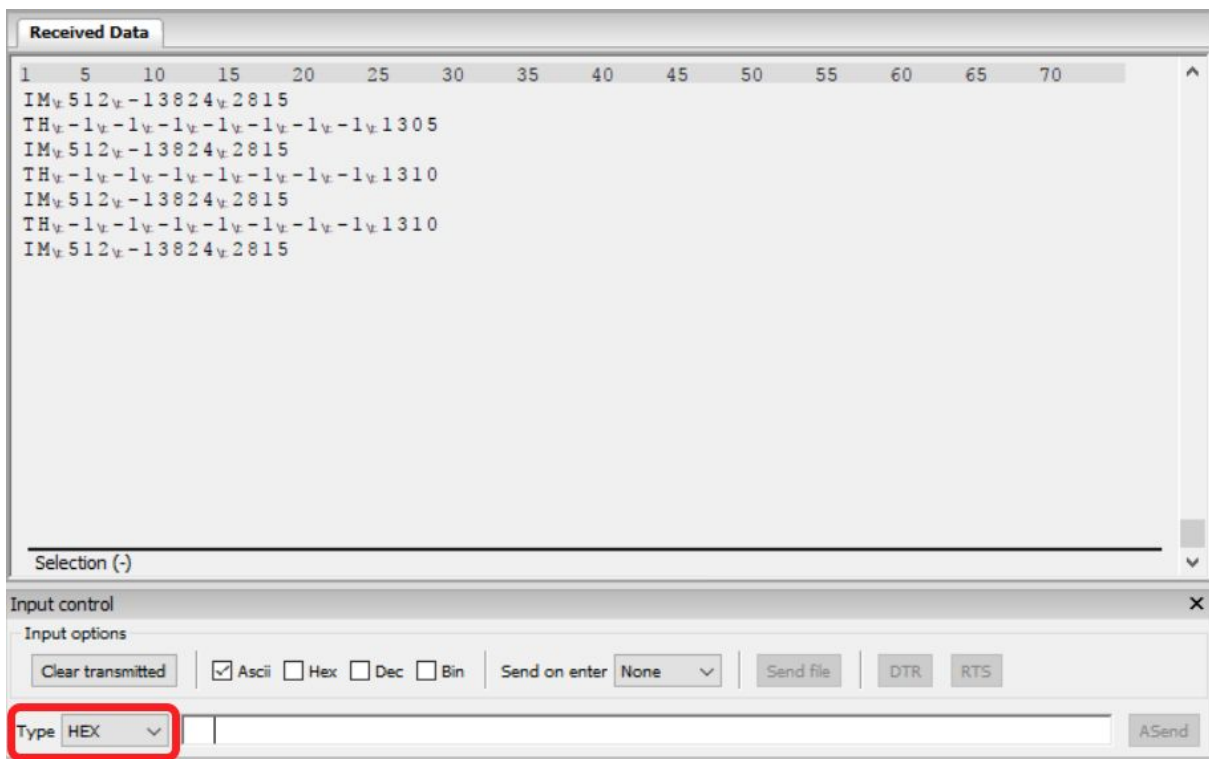


Figure 14. Communication with H-Term

To communicate with the Hub Evo via the terminal emulation software, you need to send a command in hexadecimal via the “Type” box. For this, select the “HEX” Type as illustrated in the figure above. Figure 14 shows an example of the command which allows data to be shown in TEXT mode. All commands are detailed in section 5.

In MacOS, Terabee advises the use of Coolterm for terminal emulation software.



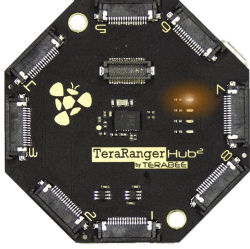
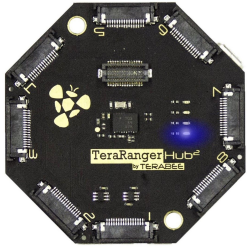
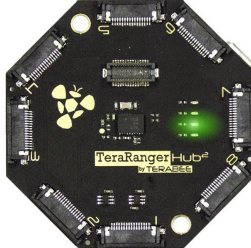
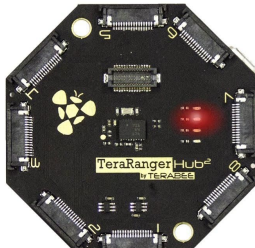
Terabee
90 Rue Henri Fabre
01630, Saint-Genis-Pouilly

Website:
Technical support:
Commercial:

www.teraranger.com
support@teraranger.com
teraranger@terabee.com

3.3 LEDs

In total, four LEDs are mounted on TeraRanger Hub Evo to give visual feedback on the sensor performance. Table below lists the functionality of each LED:

LED color	Description	Hub Visual
PWR (orange)	LED continuously on whenever connected to a power supply	
LED 0 (blue)	One blink for each TeraRanger Evo Hub sensor detected by the Hub Evo. Example: if 6 sensors are connected, the blue LED will blink 6 times before sending distance data.	
LED 1 (green)	Continuous blinking indicates that distance values are being sent	
LED 2 (red)	Continuous blinking indicates an error	



Terabee
90 Rue Henri Fabre
01630, Saint-Genis-Pouilly

Website:
Technical support:
Commercial:

www.teraranger.com
support@teraranger.com
teraranger@terabee.com

4 UART interface

4.1 Pinout information

The Hub Evo can be controlled through UART interface. This is possible thanks to a “UART board” a clip-on accessory included in the Hub Evo package. See Figure 16 for visual instructions.



Figure 16. UART board connection to Hub Evo

The UART board uses a single 6 pin Hirose DF13 connector for interfacing to the host system. The mating connector is a Hirose DF13-6S-1.25C with crimping contacts DF13-2630SCF (tin) or DF13-2630SCFA (gold). Please consider the mechanical stability of the mated connectors and avoid any kind of excess force on the connector (during installation and once integrated) and follow the recommendations in the Hirose DF13 series datasheet (available here: <https://www.hirose.com/product/en/products/DF13>) to ensure a reliable connection.

The table below provides an overview of the pinout for the DF13 connector:

Pin out and description (According to DF13 datasheet)

Pin	Designator	Description
1	NC	Not Connected
2	Rx(in)	UART receive input. 3.3V logic
3	Tx(out)	UART transmit output. 3.3V logic
4	NC	Not Connected
5	NC	Not Connected
6	GND	Interface ground



Terabee
90 Rue Henri Fabre
01630, Saint-Genis-Pouilly

Website:
Technical support:
Commercial:

www.teraranger.com
support@teraranger.com
teraranger@terabee.com

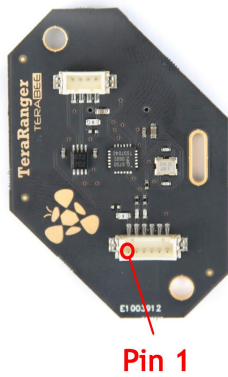


Figure 17. Pinout layout for UART

4.2 UART protocol information

The UART communication for the TeraRanger Hub Evo uses a simple Modbus-like protocol.

The communication parameters are:

Baud Rate: 921600 baud

Data Bits: 8

Stop Bit(s): 1

Parity: None

HW Flow Control: None



Terabee
90 Rue Henri Fabre
01630, Saint-Genis-Pouilly

Website:
Technical support:
Commercial:

www.teraranger.com
support@teraranger.com
teraranger@terabee.com

4.3 Interface for visual signalization

UART board provides an interface to control an intelligent LED light source compatible with WS2812B serial communication protocol. It allows you to drive up to four RGB LEDs through a single wire provided that the LEDs sink current is kept within the power budget indicated in the manual (ref. Section 2.3).

Three levels of signalization are provided to discriminate three different ranges (set with a default value during manufacturing) as shown in the table below:

Detection	Distance	Color
No obstacle in range	Out of range	None
Obstacle detected in the range	>4m	Green
Obstacle detected in the range	2m to 4m	Orange
Close obstacle	0.5 to 2m	Red

New values can be programmed through the UART interface, offering the possibility of customizing the LED triggering thresholds within the valid range of the Hub Evo. These values can span from 0.5m to 8m in 0.1m increments. The upper value of the threshold range cannot be higher than the lower value of the adjacent threshold range. Overlaps between threshold ranges are checked by the Hub Evo and, if found, the Hub Evo responds with a 'Nack' (Not acknowledged) signal. Once the thresholds system is operating, if all sensors are detecting "out of range", then all LEDs will be off. Whenever a threshold is reached by one of the sensors, the LEDs will switch to the appropriate color and stay continuously 'on' until a different threshold is activated.

Important Note: The LED signalization feature only provides an indicative proximity status based on the closest Evo sensor to an obstacle or hazard and is provided as a useful aid rather than a guaranteed fail-safe solution. **You use this feature at your own risk.**

Below 1 meter, some target surfaces (transparent or with low light reflectivity) can potentially introduce false readings which could mean that the LED signalization is not based on the closest sensor to an obstacle. However, this will only affect the LED signalization and not the distance sensing capability.



Terabee
90 Rue Henri Fabre
01630, Saint-Genis-Pouilly

Website:
Technical support:
Commercial:

www.teraranger.com
support@teraranger.com
teraranger@terabee.com

Pinout and description:

Pin	Designator	Description
1	5V	+5V supply output
2	RFU	Do not connect, reserved for future use
3	DOUT	Control data output to drive four WS2812B LEDs
4	GND	Power supply and interface ground

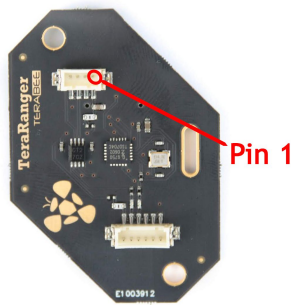


Figure 18. WS2812B serial communication, pinout layout

5 Communication and Modes

The current Hub Evo firmware provides four parameters for optimization of Hub Evo performance. The following parameters can be configured:

1. Printout modes
2. Operating modes
3. Update rate modes
4. IMU modes

Figure 19 illustrates the logic of available parameters on Hub Evo. Please note all commands to be sent via terminal emulation software are in hexadecimal format.

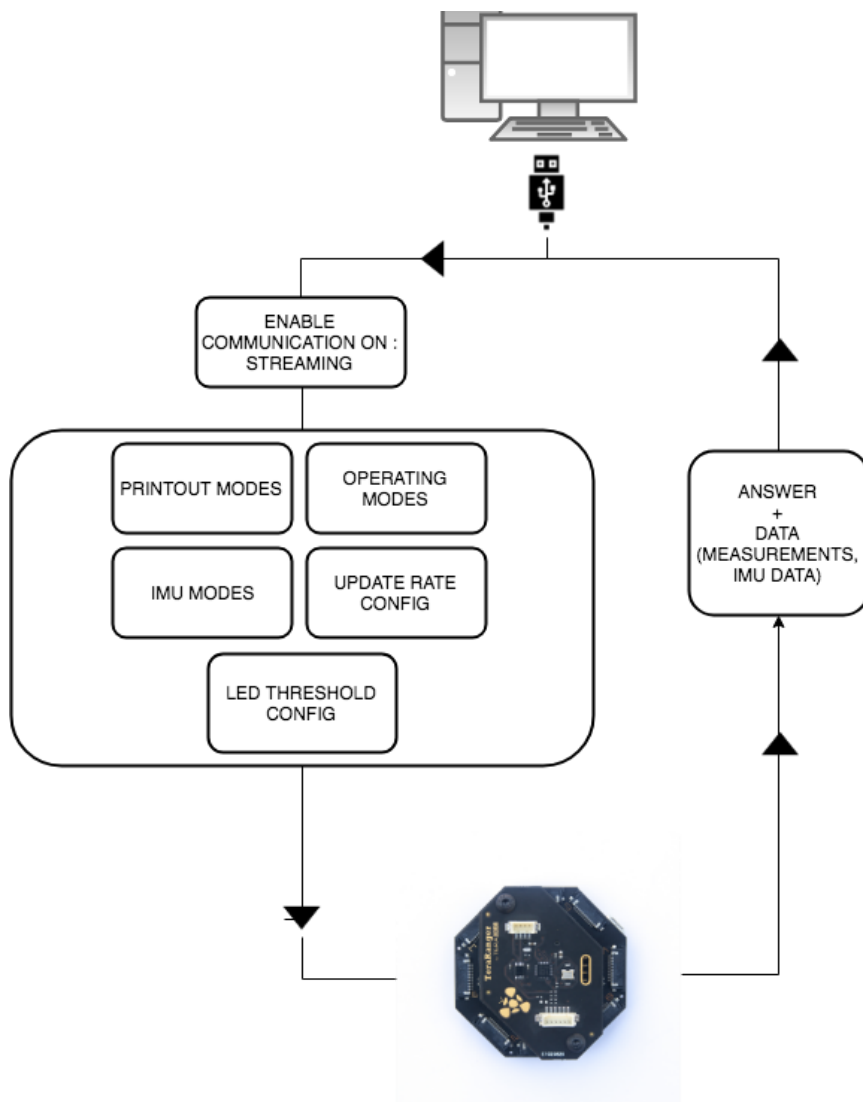


Figure 19. TeraRanger Hub Evo modes



Terabee
90 Rue Henri Fabre
01630, Saint-Genis-Pouilly

Website:
Technical support:
Commercial:

www.teraranger.com
support@teraranger.com
teraranger@terabee.com

For each command sent to Hub Evo, a response is generated to inform the user whether the command has been validated. Command responses consist of four bytes and is a hexadecimal value. Please note that it is crucial to receive an answer to a command, before communicating the next one. For more information on response values, please reference section 5.7.

5.1 Enable / Disable Hub Evo communication

In order to enable communication with Hub Evo and send commands to modify system performance, please make sure streaming is enabled.

5.1.1 Commands

Action Type	Mode name	Hex Command
Enable/disable communication	Activate streaming	00 52 02 01 DF
	Deactivate streaming	00 52 02 00 D8

5.2 Printout modes

The current Hub Evo firmware supports two display modes via terminal emulation software: (1) Text and (2) Binary.

5.2.1 Commands

Action Type	Mode name	Hex Command
Modify printout mode	TEXT	00 11 01 45
	BINARY (default)	00 11 02 4C



Terabee
90 Rue Henri Fabre
01630, Saint-Genis-Pouilly

Website: www.teraranger.com
Technical support: support@teraranger.com
Commercial: teraranger@terabee.com

5.2.2 Output format

<p>Text mode</p>	<p>Data output:</p> <p>TH\txxxx\txxxx\txxxx\txxxx\txxxx\txxxx\txxxx\txxxx\r\n</p> <ul style="list-style-type: none"> - Header (two characters): T (84 decimal / 0x54 hex) and H (72 decimal / 0x48 hex) - Tabulation: \t (9 decimal / 0x09 hex) - Distance reading in millimeters** (maximum 5 bytes per sensor): xxxx - Carriage return character: \r (13 decimal / 0x0D hex) - New line character: \n (10 decimal / 0x0A hex) <p>**if a sensor is not connected or the TeraRanger Hub Evo is unable to obtain the distance measurement from the TeraRanger Evo sensor, the associated distance value is replaced by the hexadecimal value “-1”.</p> <p>If the target is too close from the TeraRanger Evo sensor (below the minimum distance), the associated distance value is replaced by “-Inf”.</p> <p>If the target is too far from the TeraRanger Evo sensor (above the maximum distance), the associated distance value is replaced by “+Inf”.</p>
<p>Binary mode</p>	<p>Data output (20 bytes message):</p> <p>THXXXXXXXXXXXXXXXXXX M CRC8</p> <ul style="list-style-type: none"> - Header (two characters): T (84 decimal / 0x54 hex) and H (72 decimal / 0x48 hex) - Distance reading in millimeters** (2 bytes per sensor): XX - Mask (1 byte) Each bit of this byte correspond to one sensor connected to the hub.It gives an indication if the distance corresponding to the sensor is new (bit at 1) or old (bit at 0):M - Checksum (1 byte) of previous 19 bytes: CRC8 <p>**if a sensor is not connected or the TeraRanger Hub Evo is unable to obtain the distance measurement from the TeraRanger Evo sensor, the associated distance value is replaced by the hexadecimal value 0x0001.</p>



Terabee
90 Rue Henri Fabre
01630, Saint-Genis-Pouilly

Website:
Technical support:
Commercial:

www.teraranger.com
support@teraranger.com
teraranger@terabee.com

	<p>If the target is too close from the TeraRanger Evo sensor (below the minimum distance), the associated distance value is replaced by the hexadecimal value 0x0000.</p> <p>If the target is too far from the TeraRanger Evo sensor (above the maximum distance), the associated distance value is replaced by the hexadecimal value 0xFFFF.</p>
--	---

5.3 Operating modes

The current Hub Evo firmware provides three operating modes: **(1) Simultaneous mode, (2) Sequential mode and (3) Tower mode**. Please use the Tower mode only when operating the [TeraRanger Tower Evo](#) or the TeraRanger Evo Mini Array Kits (using a Tower Evo Mini frame available for download on the product page)

- Simultaneous mode supports simultaneous sensor operation. When using this mode it is important to configure your sensors in such a way that their fields of view do not overlap and create the potential for sensor cross-talk.
- Sequential mode ensures that sensors connected to Hub Evo are synchronized to avoid any signal interference between operating sensors. Operating sensors in sequential mode gives more freedom for the physical placement of the sensors but can result in a decrease in overall measurement repetition rates.
- With the Tower mode, the sensors are triggered up to 4 at a time: alternatively the sensors connected on the odd port numbers of the Evo Hub, then the sensors connected on the even port numbers. This mode works best when the sensors are positioned in a configuration where crosstalk is likely.

5.3.1 Commands

Action Type	Mode name	Hex Command
Modify operating modes	Simultaneous mode	00 31 01 EB
	Sequential mode (default)	00 31 02 E2
	Tower mode	00 31 03 E5



Terabee
90 Rue Henri Fabre
01630, Saint-Genis-Pouilly

Website:
Technical support:
Commercial:

www.teraranger.com
support@teraranger.com
teraranger@terabee.com

IMPORTANT: Sequential mode is set as the default mode. When powering and connecting the Evo Hub to a host computer for the first time, please activate the Simultaneous mode or the Tower mode by sending a corresponding command (00 31 01 EB or 00 31 03 E5) via a terminal emulation software.

The Evo Hub firmware saves the last operating mode used and auto-selects that mode the next time the system is powered up. Therefore there is no need to change the operating mode, until a different mode is required.

5.4 Output-rate rate modes

Hub Evo provides the option to modify the measurement sampling rates of the connected sensors. Users can select between six output-rate modes. ASAP, meaning ‘as soon as possible’ is, by definition, a variable rate and is dependent on how quickly the Hub receives an update from the last sensor in the chain. The other rates are fixed at 50Hz, 100Hz, 250Hz, 500Hz, 600Hz.

5.4.1 Commands

Action Type	Update rate	Hex Command
Modify update rate	ASAP (default)	00 52 03 01 CA
	50 Hz	00 52 03 02 C3
	100 Hz	00 52 03 03 C4
	250 Hz	00 52 03 04 D1
	500 Hz	00 52 03 05 D6
	600 Hz	00 52 03 06 DF

5.5 Visual signalization

The Hub Evo is shipped with default pre-programmed thresholds, but you can set your own by using the command below:

Action Type	Hex Command
Set visual signalization threshold	00 53 01 UU LL CRC8



Terabee
90 Rue Henri Fabre
01630, Saint-Genis-Pouilly

Website:
Technical support:
Commercial:

www.teraranger.com
support@teraranger.com
teraranger@terabee.com

The command is a six byte command. UU is the byte that represents the upper threshold in decimeter and LL the lower one. The range of the threshold is 5 to 80 decimeter and the value of the upper one should not be less than the value of the lower one. The CRC need to be calculated using the five first bytes of the command.

5.6 Internal Measurement Unit (IMU) options

TeraRanger Hub Evo provides an onboard IMU, supporting users with spatial orientation data. By default the IMU is disabled. Three modes are available:

1. Euler mode,
2. Quaternion mode,
3. Quaternion and Linear Acceleration mode.

Magnetic fields and vibration can disrupt IMU calibration. In order to force a self-calibration of the IMU, move the TeraRanger Hub Evo in ways that use the full range of each axis.

Here is a non-exhaustive list of motions that help with calibration:

1. For magnetometer and gyroscope: (1) draw a figure of eight into the air, (2) make a full turn in the two directions of each axis (6 rotations in total).
2. For accelerometer: Hold the Hub Evo for a few seconds in each of the following positions; left side, right side, front side, back side, up side, down side.

For further explanation about the IMU orientation calibration, please refer to the following link: <https://www.youtube.com/watch?v=Bw0WuAyGsnY>

5.6.1 Euler mode

Euler mode provides three classic Euler angles: heading (aka yaw), roll and pitch. Please see figure 20 for heading, roll and pitch directions on your Hub Evo.



Terabee
90 Rue Henri Fabre
01630, Saint-Genis-Pouilly

Website:
Technical support:
Commercial:

www.teraranger.com
support@teraranger.com
teraranger@terabee.com

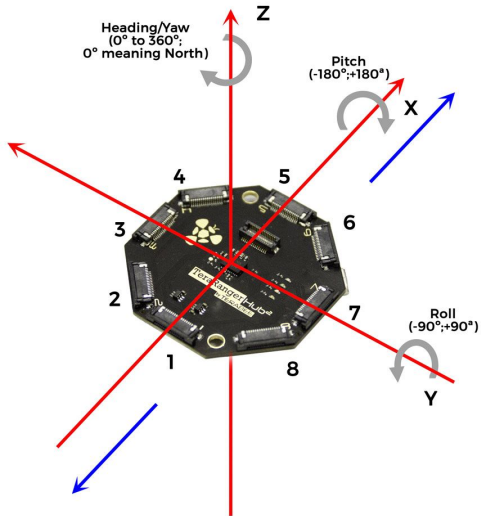


Figure 20. Roll, pitch, heading (aka yaw)

When enabling Euler mode, the displayed values are in degrees. Please see below the corresponding scaling for each of the axes:

1. Heading angle (around Z axis) goes from 0° to 360°, 0° meaning North
2. Pitch rotates from -180° to +180° around x axis
3. Roll values are in the interval [-90°;+90° around y axis] and will loop twice.

Please note that 0° for pitch and roll angle means that the TeraRanger Tower Evo is horizontal.

5.6.2 Quaternion mode

To deal with matrix rotation in space, the quaternion approach simplifies the heavy math related to trigonometry and reduces the processing power requirements and optimizes the speed of operations. The Hub Evo can provide this kind of information through internal pre-processing and data fusion. For further explanation about the quaternion and the spatial rotation matrix, please refer to the following link:

https://en.wikipedia.org/wiki/Rotation_matrix#Quaternion

5.6.3 Quaternions and linear acceleration

Quaternions and linear acceleration mode displays the same coefficient as the quaternion mode, however it also gives the linear acceleration of the IMU in milli-g. Please refer to figure 20.



Terabee
90 Rue Henri Fabre
01630, Saint-Genis-Pouilly

Website:
Technical support:
Commercial:

www.teraranger.com
support@teraranger.com
teraranger@terabee.com

- x acceleration refers to the x axis
- y acceleration refers to the y axis
- z acceleration refers to the z axis

Note: To convert those values to m.s-2 the conversion factor is **0.00980665**

It is important to know that there might be a constant offset (this can be visualized when the TeraRanger Hub Evo is not moving) on the acceleration values, that can be corrected by calibrating the IMU (see section 5.6).



Terabee
90 Rue Henri Fabre
01630, Saint-Genis-Pouilly

Website:
Technical support:
Commercial:

www.teraranger.com
support@teraranger.com
teraranger@terabee.com

5.6.4 Commands

Action Type	Mode name	Hex Command
Modify IMU mode	Activate Quaternion mode	00 41 02 40
	Activate Euler mode	00 41 03 47
	Activate Quaternion & Linear acceleration mode	00 41 04 52
	Deactivate IMU (default)	00 41 01 49

5.6.5 Output format

Printout mode	IMU mode	Description
Binary	Quaternion	<p>Data output (12 bytes message):</p> <p>IM 0x01 WW XX YY ZZ CRC8</p> <ul style="list-style-type: none"> - Header (two characters): I (73 decimal / 0x49 hex) and M (77 decimal / 0x4D hex) - Mode (1 byte) This byte indicate in which IMU mode you are. For quaternion this byte is equal to 0x01 - Orientation data in quaternion format (2 bytes per coordinate), each two bytes represent a signed 16 bit value. You need to divide those four values by 2^{14}. - Checksum (1 byte) of previous 11 bytes: CRC8



Terabee
90 Rue Henri Fabre
01630, Saint-Genis-Pouilly

Website:
Technical support:
Commercial:

www.teraranger.com
support@teraranger.com
teraranger@terabee.com

	Euler	<p>Data output (10 bytes message):</p> <p>IM 0x02 HH RR PP CRC8</p> <ul style="list-style-type: none"> - Header (two characters): I (73 decimal / 0x49 hex) and M (77 decimal / 0x4D hex) - Mode (1 byte) This byte indicate in which IMU mode you are. For euler this byte is equal to 0x02 - Euler angles (2 bytes per angle), each two bytes represent a signed 16 bit value. You need to divide those three values by 16 to convert them in degree. - Checksum (1 byte) of previous 9 bytes: CRC8
	Quaternion and Linear acceleration	<p>Data output (18 bytes message):</p> <p>IM 0x03 WW XX YY ZZ XX YY ZZ CRC8</p> <ul style="list-style-type: none"> - Header (two characters): I (73 decimal / 0x49 hex) and M (77 decimal / 0x4D hex) - Mode (1 byte) This byte indicates in which IMU mode you are. For quaternion and linear acceleration this byte is equal to 0x03 - Orientation data in quaternion format (2 bytes per coordinate), each two bytes represent a signed 16 bit value. You need to divide those four values by 2^{14}. - Linear acceleration (2 bytes per axis), each two bytes represent a signed 16 bit value. Those value are expressed in mg. - Checksum (1 byte) of previous 17 bytes: CRC8

Printout mode	IMU mode	Description
Text	Euler	<p>Data output:</p> <pre>IM\t hhh\trrr\tppp\r\n</pre> <ul style="list-style-type: none"> - Header (two characters): I (73 decimal / 0x49 hex) and M (77 decimal / 0x4D hex) - Tabulation: \t (9 decimal / 0x09 hex) - Euler angles. You need to divide those three values by 16 to convert them in degree. - Carriage return character: \r (13 decimal / 0x0D hex) - New line character: \n (10 decimal / 0x0A hex)
	Quaternion	<p>Data output:</p> <pre>IM\t www\txxx\tyyy\tzzz\r\n</pre> <ul style="list-style-type: none"> - Header (two characters): I (73 decimal / 0x49 hex) and M (77 decimal / 0x4D hex) - Tabulation: \t (9 decimal / 0x09 hex) - Orientation data in quaternion format. You need to divide those four values by 2^{14}. - Carriage return character: \r (13 decimal / 0x0D hex) - New line character: \n (10 decimal / 0x0A hex)
	Quaternion and Linear acceleration	<p>Data output:</p> <pre>IM\t www\txxx\tyyy\tzzz\txxx\tyyy\tzzz\r\n</pre> <ul style="list-style-type: none"> - Header (two characters): I (73 decimal / 0x49 hex) and M (77 decimal / 0x4D hex) - Tabulation: \t (9 decimal / 0x09 hex) - Orientation data in quaternion format. You need to divide those four values by 2^{14}. - Linear acceleration. Those value are expressed in mg. - Carriage return character: \r (13 decimal / 0x0D hex) - New line character: \n (10 decimal / 0x0A hex)

5.7 Command validation

For each command sent, a response is generated to inform the user whether the command has been validated. It is important to receive a response value before proceeding with the next command. Sending commands too early may discard the one still processing. Response commands consist of four bytes and are a hexadecimal value. They contain (in order):

- a header (0x30)
- the CMD code which corresponds to the first four most significant bits of the second byte of the send command (for example for the command 0x00110145 it will be 0x01)
- an ACK (0x00) or a NACK (0xFF)
- a CRC-8 checksum of the message contents

Example:

Hex Command: **00 11 01 45**

Hex Answer: **30 01 00 F4**

To calculate the CRC-8 checksum byte, we advise you to use an online CRC-8 calculator. Here is one: http://www.sunshine2k.de/coding/javascript/crc/crc_js.html

The following table sums-up the expected responses to all the commands described in the document.

Action Type	Valid responses
Enable/disable communication	30 05 00 A0
Modify printout mode	30 01 00 F4
Modify operating modes	30 03 00 DE
Modify update rate	30 05 00 A0
Modify IMU mode	30 04 00 B5
Modify LED threshold	30 05 00 A0



Terabee
90 Rue Henri Fabre
01630, Saint-Genis-Pouilly

Website: www.teraranger.com
Technical support: support@teraranger.com
Commercial: teraranger@terabee.com